

# AUBERGINE ART

GALLERY & PICTURE FRAMING



'Sussex' Oil on Canvas, 100 x 100cm - Paul Treasure

## GALLERY ARTISTS

OPENING 5-7PM FRIDAY 4<sup>TH</sup> OCTOBER  
REFRESHMENTS AVAILABLE

# CONTENTS

## *INTRODUCING*

Page 4: Paul Treasure

Page 9: Ruth Bowyer

Page 11: Penelope Williams

## *WELCOMING BACK*

Page 5: Nigel Sharman

Page 6: Vanessa Bowman

Page 7: Teresa Chlapowski

Page 8: Lana Okiro

Page 10: Colin Cook

# GALLERY ARTISTS

Welcome to this specially curated autumn exhibition showcasing new talents alongside a host of our most well-loved and collected artists. We are delighted to introduce Paul Treasure, whose expressive and dramatic interpretations of the English landscape vibrate with feeling, energy and colour. Ruth Bowyer, who hails from a family of artists and offers distinctive and dramatic still lifes replete with skillfully rendered reflections, revealing the beauty of everyday forms. And Penelope Williams, whose work blends the fragile and delicate forms of feather and flower with bold brushstrokes and abstract swathes of colour, summoning an emotional response in the viewer.

Joining these are gallery favourites Vanessa Bowman, known for her gloriously vibrant florals and still lifes, and Nigel Sharman, painter of subtle and atmospheric still lifes, seascapes and figures, primarily using a tonal palette. Glass maker Teresa Chlapowski has created a new collection of work including striking wall panels, sculptural freestanding panels and beautiful bowls. Long standing gallery favourite Lana Okiro offers an autumnal selection of seasonal fruit and vegetables, forests and city scenes, whilst the ever talented Colin Cook, painter of Northern English land, sea and cityscapes, presents a new collection celebrating the timeless beauty of his locality.

*Kat Kowalewska, Exhibition Curator*



# PAUL TREASURE



Pilchard Tide, Oil on Canvas, 100cm x 100cm

Paul's style is expressive, energetic and full of colour. His paintings capture the feeling and emotion of a place, whilst depicting the interplay between light, land, water and sky. His bold use of palette knife, brush strokes and mixed media result in distinctive mark-making which culminates in vigorous, textured landscapes.

# NIGEL SHARMAN



Moored Boats in Harbour, Oil On Canvas, 60 x 60cm

Nigel uses oil on canvas and sometimes board, with particular concern for colour and composition. Though semi-abstract, there is a strong figurative read to his work. He abstracts from a source by removing some of the conventions of representation, hoping to create “an awkward but calm relationship” between his subject and the viewer.

# VANESSA BOWMAN



Nasturtiums in Turquoise Jug, Oil on Card, 10" x 12"

Vanessa Bowman is known for her skills in composition and colour balance. Each of her still lifes observes the beauty of everyday objects - a vase of garden flowers...a bowl of lemons - their acid yellow placed against the deep magenta plum - a striped shell. Each is placed within the framework of the painting, combining muted subtle colour with jewel like accents, to summon a reaction of intense joy and pleasure in the viewer.



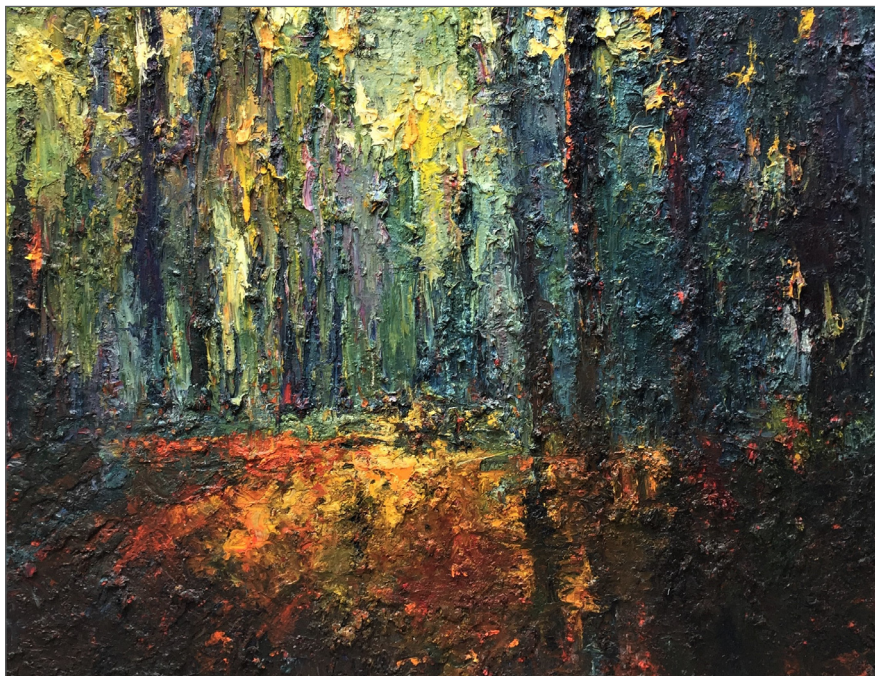
# TERESA CHLAPOWSKI



Summer Garden Cushion Bowl, Fused and Slumped Glass, 23 x 38 x 6cm

Teresa creates both sculptural and functional pieces using fused glass, kiln and sand cast glass. Her freestanding sculptures –likened to paintings in glass- are often figurative, offering the viewer a frozen moment of animation. Teresa uses colour in a dynamic and expressive way to infuse simple pieces such as plates and bowls with a joy and vitality that makes her work instantly accessible.

# LANA OKIRO



Forest, Oil on Canvas, 76 x 102cm

Lana works in oil, a medium which gives great depth of colour and allows for the generation of heavy impasto paintings. Her distinctive style continues to develop with each painting and her highly contemporary interpretations of land and sea, still life and cityscape incorporate distinctive bold brushstrokes and bright colours, creating vivid works with a surprising element of subtlety.



# RUTH BOWYER



Lemons and Green Glass, Oil on Board, 10" x 8"

Ruth Bowyer hails from a family of artists and spent many years painting landscapes and portraits. She is well known for her pencil portraits on Brixham harbour, yet it is her still-life paintings that have brought her most acclaim. These distinctive and dramatic compositions are replete with skillfully rendered reflections and tenderly handled colour, the vibrant singing next to the muted, revealing the extraordinary beauty of everyday forms.

# COLIN COOK



York Minster from Low Petergate, Acrylic on Canvas, 33" x 23"

Colin lives and paints near Whitby in North Yorkshire, taking inspiration from the coast, moors and lakes that lie on his doorstep. His work is representational, based on observation of constantly changing light, and seeks to create atmosphere through the use of dramatic light and bold mark making. Compositional tension is important and created by the careful arrangement of different pictorial elements such as colour, texture and light etc.

# PENELOPE WILLIAMS



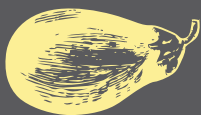
Waiting in the dark, I am here, Falling Slowly  
Oil and Ink on Board, 15 x 15cm each (set of four)

Penelope's work blends the fragile and delicate forms of feather and flower with expressive brushstrokes and abstract swathes of colour. This series is inspired by quotes taken from letters, written by the artist Christopher Wood (1901-1930) to Winifred Nicholson, relating to Wood's sense of searching and belonging. "I feel a bit like a feather drifting about in the wind...Once here and sometimes forgotten."



All work is available on receipt of this catalogue,  
please contact the gallery by phone or email  
to reserve work on 0208 947 7838.

This catalogue only features a selection of work;  
the full show can be viewed on our website:



[WWW.AUBERGINEART.CO.UK](http://WWW.AUBERGINEART.CO.UK)



[INSTAGRAM.COM/AUBERGINEART.GALLERY](https://www.instagram.com/aubergineart.gallery)



[FACEBOOK.COM/AUBERGINEARTGALLERY](https://www.facebook.com/aubergineartgallery)

JOIN OUR MAILING LIST TO RECEIVE  
INVITATIONS TO EXHIBITIONS,  
SPECIAL DISCOUNTS & OFFERS!

1 Queens Road, Wimbledon, London. SW19 8NG

Email: [gallery@aubergineart.co.uk](mailto:gallery@aubergineart.co.uk) Tel: 0208 947 7838