

AUBERGINE  ART
GALLERY & PICTURE FRAMING

Poseidon

An Ode to the Ocean

PRIVATE VIEW WEDNESDAY 31st MAY
5 - 8pm Refreshments Available.

POSEIDON: AN ODE TO THE OCEAN

This exhibition celebrates the magic, mystery and majesty of the vast oceans that comprise over seventy percent of Earth. Many great artists have made the sea their motif; we only need to think of Turner, who painted over a thousand seascapes in his career, and the beautifully stylised breaking waves of Katsushika Hokusai to see how the ocean has inspired some of the most influential art ever created.

We have curated this special exhibition to bring you some of the best contemporary artwork inspired by the sea, including serene studies of waves breaking by cover artist Dawn Reader, the light infused work of Tina Morgan SWA, whose evocative palette brings a day at the beach to life, and the brilliantly vibrant work of Terence Clarke, from whose canvases the warmth of the Mediterranean bursts forth.

Catherine Forshall prefers to look beneath the waves, shining her artistic spotlight on the treasures found at low tide and the fascinating life forms that thrive under the water, whilst keen surfer and artist Hannah Davies is pre-occupied with the transformative effects of light on sand as the tide ebbs and flows. Prominent plein air painter Douglas Hill brings years of skill to his beautiful oils of the seas, beaches and harbours that he knows so well. Young Cornish sculptor James Eddy uses aluminium, steel, copper and gold to render his incredible shoals of fish.

Another artist hailing from Cornwall is established sculptor Chris Buck, who uses bronze to create the feel of waves and the kinetic energy of the ocean, whilst from the very tip of our island at Land's End come the magical handprinted woodcuts of Angela Annesley, from whose prints emerge mermaids and mermen, breaking waves, soaring gulls and the even the title Greek God of the exhibition, Poseidon.

“My soul is full of longing
for the secret of the sea,
and the heart of the great ocean
sends a thrilling pulse through me.”
- Henry Wadsworth Longfellow

The full exhibition is available to view on our website www.aubergineart.co.uk
The exhibition will run from Wednesday 31st May – Wednesday 28th June.

CATHERINE FORSHALL



'Low Tide', Acrylic on Canvas, 130cm x 80cm.

Catherine Forshall was brought up on the West Coast of Scotland where her house looked out onto the deep, dark waters of Loch Lomond. Her father used to take her mackerel fishing on Loch Fyne, a sea Loch on the other side of the mountain. Thus was born her deep and enduring love of the sea.

She works in many media including acrylic on canvas and watercolour, and her skill in rendering the beauty, grace and energy of the world under the sea is self evident.

Catherine shows with Flying Colours and the Bowie Gallery, and we are very privileged to include her work for the first time in this exhibition. Spending her time between her primary base in Devon and her studio in South West France, Catherine's work continues to evolve and highlight the beauty of marine life. She is passionate about the preservation of the seas and supports the Marine Conservation Society.

DAWN READER



Peaceful Reflection I, 40cm x 40cm, Oil on Canvas.

Dawn Reader works in oil on canvas, rendering the breaking of a wave or the play of light on a beach with precise, skilful brushstrokes. Her paintings are imbued with both the serenity and the energy of the ocean, allowing the viewer to feel they are stood on the edge of the ocean, toes dipped in the spray.

Dawn says of her work 'I have been painting the sea for as long as I can remember, and came to realise that what captivated me most in my travels for wonderful waves was the quality of light. By simplifying and softening the forms of the landscape and through using a limited and somewhat muted palette, I aim to extract and focus more on a spiritual serenity.'

Formerly based in London, Dawn has recently moved to Somerset in search of peace and a better quality of life. Dawn has shown at Box Galleries, Lucy B Campbell and Northcote Road galleries amongst others. This is her first showing at Aubergine Art.

CHRIS BUCK



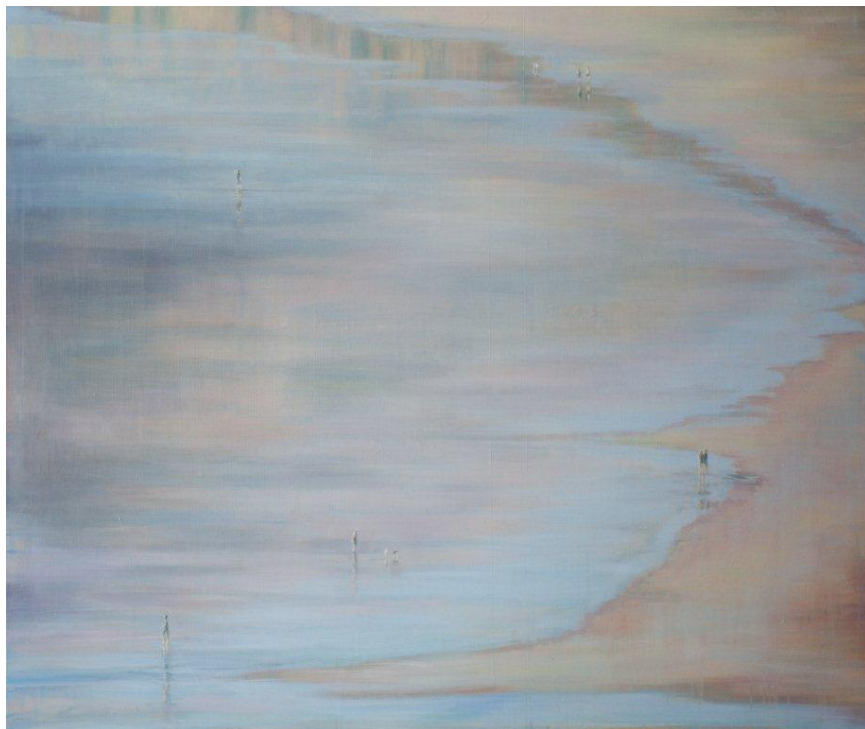
(Left) *Of A Deep Blue Dream*, Bronze on Oak, 18cm high,
(Right) *Some Day*, Bronze on Slate, 15cm high.

Chris Buck studied at Redruth School of Art, Cornwall. He has worked in several foundries, which has given him a thorough knowledge of casting techniques. He is inspired by the St. Ives abstract artists, and is a Member of the Penwith Society of Arts founded by Barbara Hepworth and Ben Nicholson.

His studio is in a converted byre, overlooking fields and hedgerows, and this brings a feeling of harmony with the natural world to his art.

Producing sculpture in both wood and stone, it is in bronze that he finds the greatest satisfaction, combining natural forms and industrial precision to achieve individual pieces of strength and beauty.

HANNAH DAVIES



Tide Retreat, Oil on Canvas, 100cm x 120 cm.

Hannah lives and paints in Bude, North Cornwall, the perfect setting for her twin passions: painting and surfing. She works in oil on canvas, achieving an iridescent finish by using transparent layers of paint, built up slowly, so that each layer is visible on the canvas.

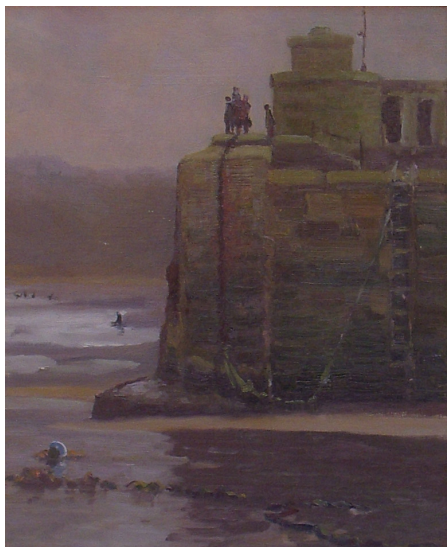
Her fascination with the glistening play of light on sand as the tide ebbs and flows is a theme that she returns to again and again. Her large, dreamy beachscapes capture perfectly the transcendent experience of walking over the magical lunar landscape that is revealed at low tide.

Hannah is a busy mother of two and a talented painter. This will be the second time she has shown with Aubergine Art.

DOUGLAS HILL



Low Tide Whitby Sands,
Oil on Canvas, 24in x 20in.



The Old Pier Newquay,
Oil on Board, 16in x 12in.

Born in West Yorkshire in 1953, Douglas Hill has established a name as one of the leading plein air painters in Britain.

Completely self-taught, Douglas paints directly from nature in oils, and his works have been featured in galleries all over the UK and as far afield as the USA, New Zealand, and Northern Ireland. He is perhaps most well-known for large beach scenes and Cornish harbours and towns, having spent much of his life there.

He was a member of the St. Ives Society of Artists & St. Ives Arts Club, and ran his own gallery on Fore St. for sixteen years. Douglas now resides in North Yorkshire where he is finding new inspiration in the rich and varied landscape.

TERENCE CLARKE



The Bay of Napoule, Cote D'Azur, Oil on Canvas, 45cm x 55 cm.

Terence's work is characterized by strong drawing and the use of bold colour and is highly regarded for its composition. His landscapes and still lifes are richly worked with a subtle and expressive use of paint, with influences ranging from Matisse to the Scottish Colourists.

His motifs are simple yet vivid, often filled with an intense light, influenced by his periods of work in France. This gives his work a Mediterranean feel, which makes his work popular with collectors.

Terence's work has been placed in some important private collections in Europe and America.

TINA MORGAN SWA



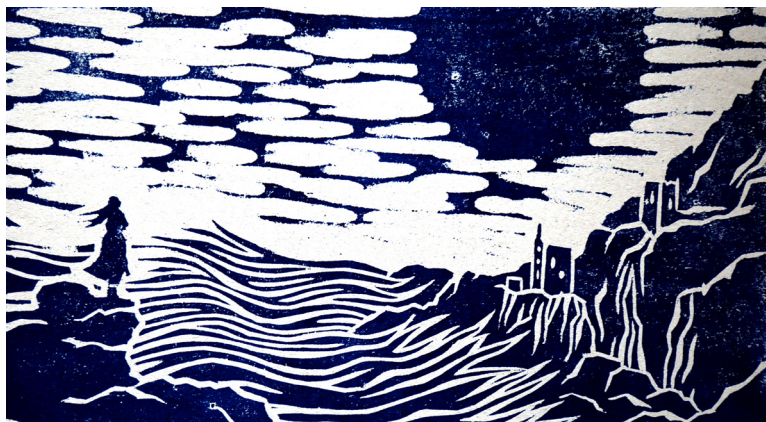
Orange Beach Ball, Oil on Canvas, 102cm x 102cm.

Tina Morgan was born in Lynton, Devon in 1952 and studied art and design in Cornwall. She has been inspired by a number of artists including Royal Academicians Fred Cuming and Ken Howard.

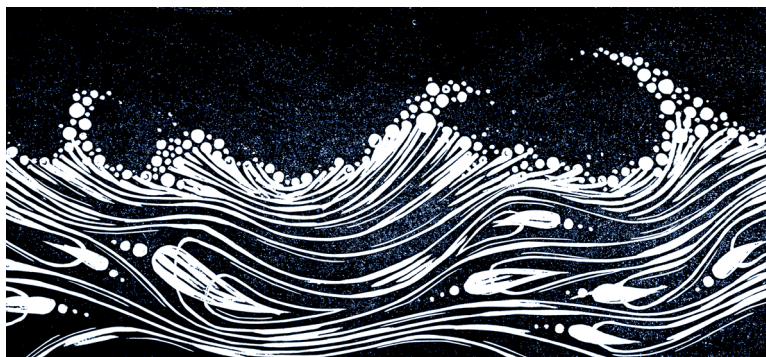
Tina is a member of the Royal Society of Women Artists and has established herself as an artist with a reputation for capturing the light and the lazy day holiday buzz of people relaxing on the south Devon beaches.

Her softness of palette and great skill in observing and depicting people creates artwork with a timeless quality. She creates a unique luminosity in her paintings which reflects her continuing love of the British coastline and landscape. This is the first time Tina has shown with Aubergine Art.

ANGELA ANNESLEY



Demelza, Woodcut Print (detail), 11in x 7.5in.

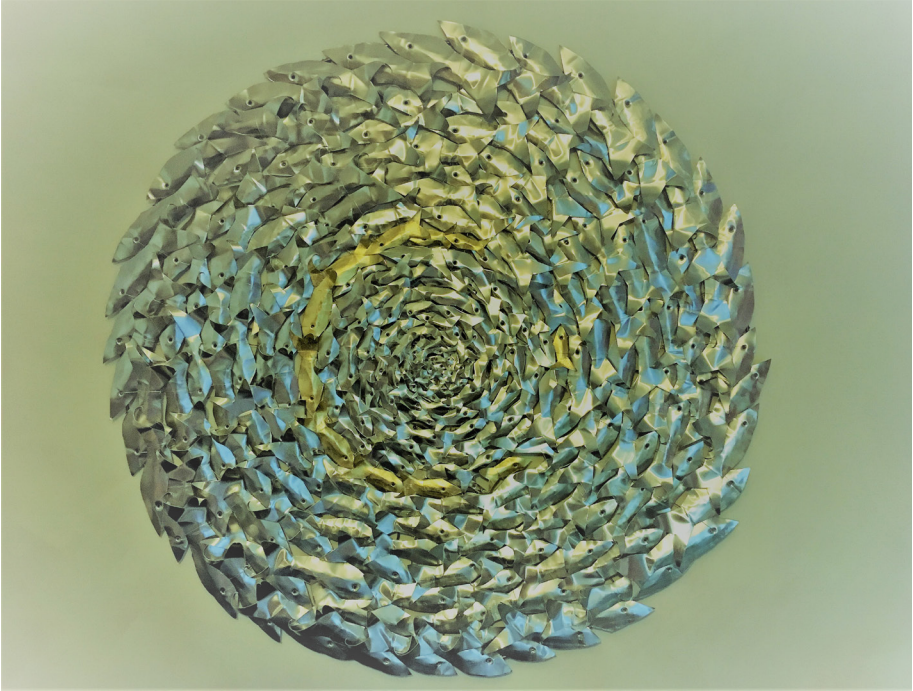


White Horses, Woodcut Print, 9.5in x 20in.

Living and working near Lands End, Angela is better placed than most to depict the unique interaction between land and sea. She specialises in handprinted woodcuts and art books, depicting scenes that reflect the opposing curves and angles of the natural and industrial landscapes and the wild seascapes of England. Animals run free in their natural environment whilst mermaids frolic in the waves, and wolves, ravens, rabbits and foxes roam the riverside woodlands.

Unlike traditional woodcuts, Angela's illustrations develop organically as she works on each piece. Designs are roughly planned on the wood or plate, and then developed through the techniques and idiosyncrasies of gouging and carving. We are delighted to introduce her work to Aubergine Art in this unique exhibition.

JAMES EDDY

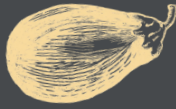


Circle Shoal, Gold Line, Aluminium, Steel, Copper & 22ct Gold, 100cm x 100cm x 10cm.

James Eddy is a sculptor and land artist born in Truro, Cornwall in 1975, where he currently lives and works. An avid painter at school in Redruth, he continued studying art whilst at school in Scotland. Upon graduating James had his first exhibition in Falmouth in November 2000, and has since enjoyed a broad and varied career as an artist.

He works in wood, metal and stone, producing a range of work for both interior and exterior show. We are excited to feature one of his incredible shoal sculptures, inspired by the furious movement and flowing forms created by fish shoals, made of aluminium, steel, copper and 22 carat gold interwoven together.

James' work bridges a gap between sculpture and painting, designed as it is to hang flush to a wall, making it uniquely attractive for both domestic and commercial settings.



WWW.AUBERGINEART.CO.UK

This catalogue features a selection of artworks,
please view the complete portfolio on our website.

Join our mailing list to recieve Gallery news,
invitations to Exhibitions and Special Offers.

1 Queens Road, Wimbledon, London, SW19 8NG
Telephone: 0208 947 7838 Email: gallery@aubergineart.co.uk